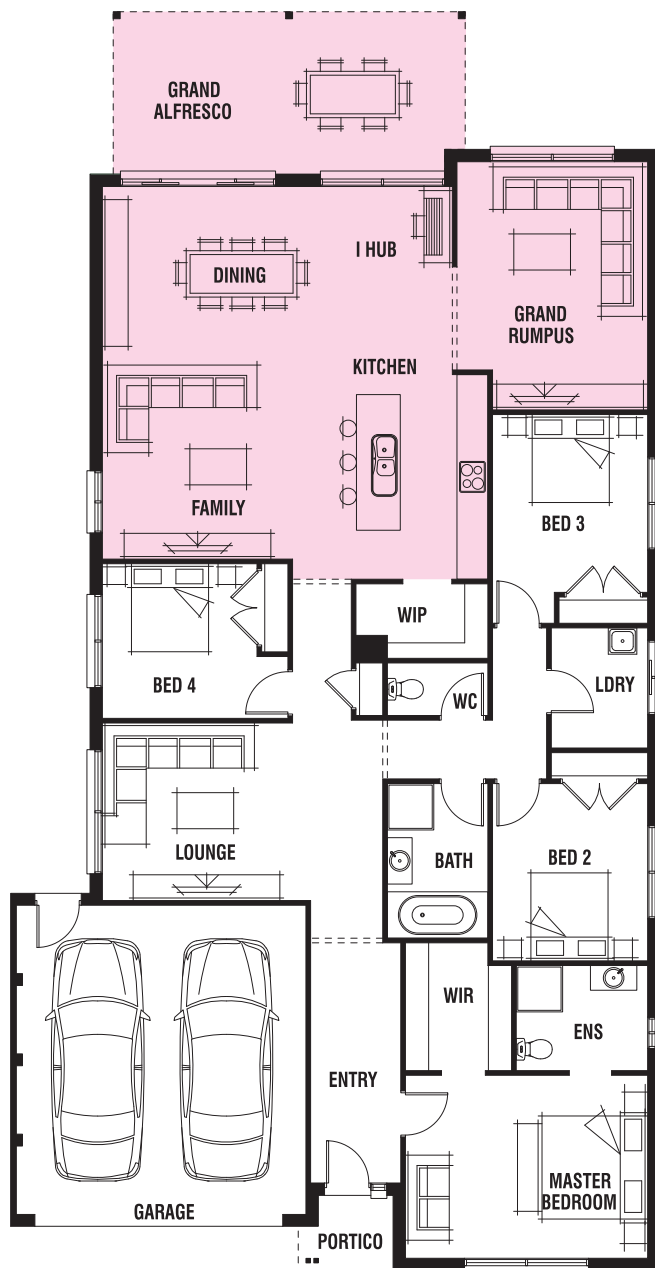


Bermuda 23

KITCHEN GRAND RUMPUS & GRAND ALFRESCO OPTION

4  2  2  2 



24.42m

MINIMUM
LOT WIDTH#

14.0m+

MINIMUM
LOT DEPTH#

32.0m+

TOTAL
SQUARES

28.54sq

12.60m



homes by
MICHAEL KREGAR

www.kregarhomes.com.au

*Sizes may vary slightly as per facade range. Floorplan based on the Maya facade - see facade pricelist for RRP. # Minimum Lot Sizes may vary due to Council requirements & estate guidelines. This work is exclusively owned by 'homes by MICHAEL KREGAR' and cannot be reproduced or copied either wholly or in part, in any form (graphic, electronic or mechanical, including photocopying and uploading to the internet) without the written permission of 'homes by MICHAEL KREGAR'. This document is for illustration purposes and should be used as a guide only. Illustrations are not to scale. Garage dimensions are external measurements only. Refer to actual working drawings.