

# Kew 28

STANDARD FLOORPLAN with MAYA FACADE

4  3  2  2 

Lot Width **15.0m+**

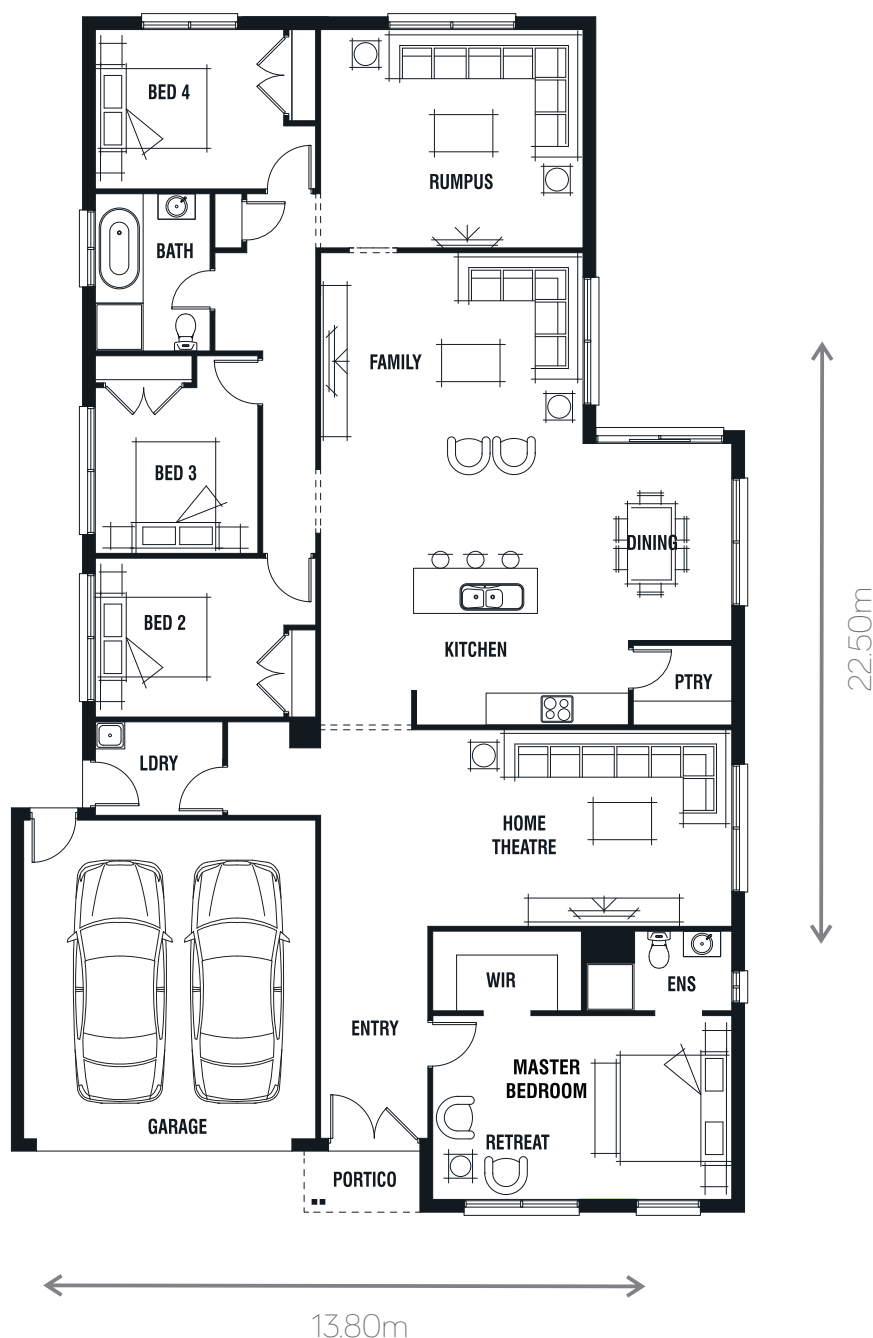
Lot Depth **30.0m+**

## AVAILABLE SIZES

KEW 28

## DESIGN OPTIONS

CORNER ALFRESCO OPTION  
EXTENDED KITCHEN OPTION  
EXTENDED LAUNDRY OPTION  
GRAND ALFRESCO OPTION  
MASTER ENSUITE OPTION  
SEPARATE WC & BATHROOM OPTION  
SIDE ALFRESCO OPTION  
STUDY OPTION  
WALK-IN-LINEN OPTION



## ROOM SIZES

Master Bedroom	5.6 x 3.5m
Bedroom 2	3.6 x 3.0m
Bedroom 3	3.1 x 3.1m
Bedroom 4	3.6 x 3.0m
Family	4.9 x 4.1m
Dining	2.8 x 3.7m
Rumpus	4.9 x 4.1m
Home Theatre	5.7 x 3.7m

## HOUSE AREA

Living Area	223.89m <sup>2</sup>	24.10sq
Garage	36.01m <sup>2</sup>	3.88sp
Portico	2.51m <sup>2</sup>	0.27sq*
<b>Total</b>	<b>262.41m<sup>2</sup></b>	<b>28.25sq*</b>



homes by  
**MICHAEL KREGAR**

[www.kregarhomes.com.au](http://www.kregarhomes.com.au)

\*Sizes may vary slightly as per facade range. Floorplan based on the Maya facade - see facade pricelist for RRP. # Minimum Lot Sizes may vary due to Council requirements & estate guidelines. This work is exclusively owned by 'homes by MICHAEL KREGAR' and cannot be reproduced or copied either wholly or in part, in any form (graphic, electronic or mechanical, including photocopying and uploading to the internet) without the written permission of 'homes by MICHAEL KREGAR'. This document is for illustration purposes and should be used as a guide only. Illustrations are not to scale. Garage dimensions are external measurements only. Refer to actual working drawings.