

# Vermont 33

STANDARD FLOORPLAN with SEASIDE FACADE

4  3  2  2 

Lot Width **14.6m+**

Lot Depth **23.0m+**

## AVAILABLE SIZES

VERMONT 29

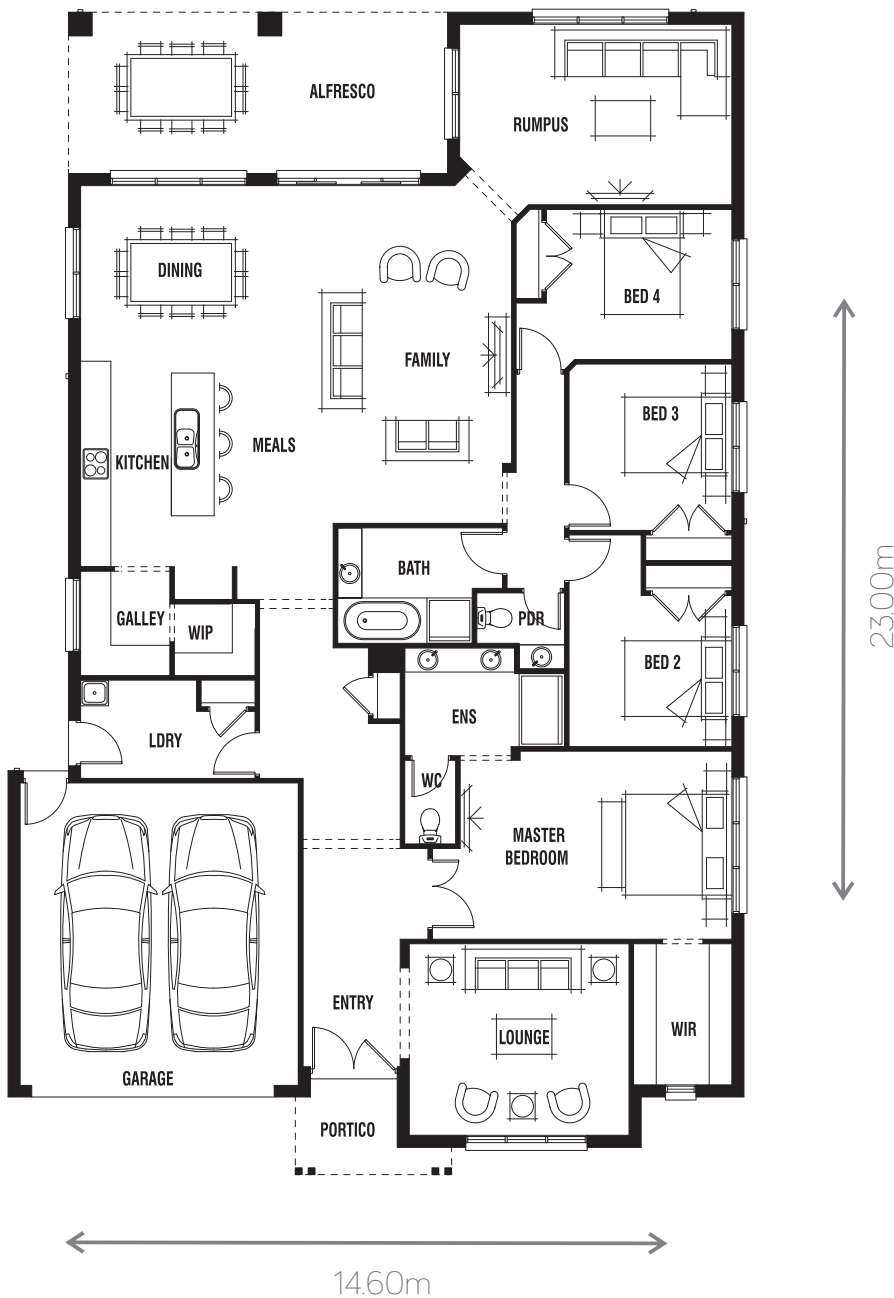
VERMONT 33

## DESIGN OPTIONS

SOAKER TUB TO ENSUITE OPTION

SHOWER TO POWDER ROOM OPTION

BED 5 AND ENSUITE OPTION



## ROOM SIZES

Master Bedroom	3.7 x 5.4m
Bedroom 2	3.0 x 3.2m
Bedroom 3	3.3 x 3.2m
Bedroom 4	3.0 x 3.7m
Family	6.7 x 4.6m
Dining	3.7 x 4.0m
Lounge	3.8 x 4.4m
Rumpus	3.6 x 5.4m

## HOUSE AREA

Living Area	240.03m <sup>2</sup>	25.84sq
Garage	36.26m <sup>2</sup>	3.90sq
Alfresco	24.06m <sup>2</sup>	2.59sq
Porch	4.31m <sup>2</sup>	0.46sq*
<b>Total</b>	<b>304.6m<sup>2</sup></b>	<b>32.79sq</b>



homes by  
**MICHAEL KREGAR**

[www.kregarhomes.com.au](http://www.kregarhomes.com.au)

\*Sizes may vary slightly as per facade range. Floorplan based on the Seaside facade - see facade pricelist for RRP. # Minimum Lot Sizes may vary due to Council requirements & estate guidelines. This work is exclusively owned by 'homes by MICHAEL KREGAR' and cannot be reproduced or copied either wholly or in part, in any form (graphic, electronic or mechanical, including photocopying and uploading to the internet) without the written permission of 'homes by MICHAEL KREGAR'. This document is for illustration purposes and should be used as a guide only. Illustrations are not to scale. Garage dimensions are external measurements only. Refer to actual working drawings.