

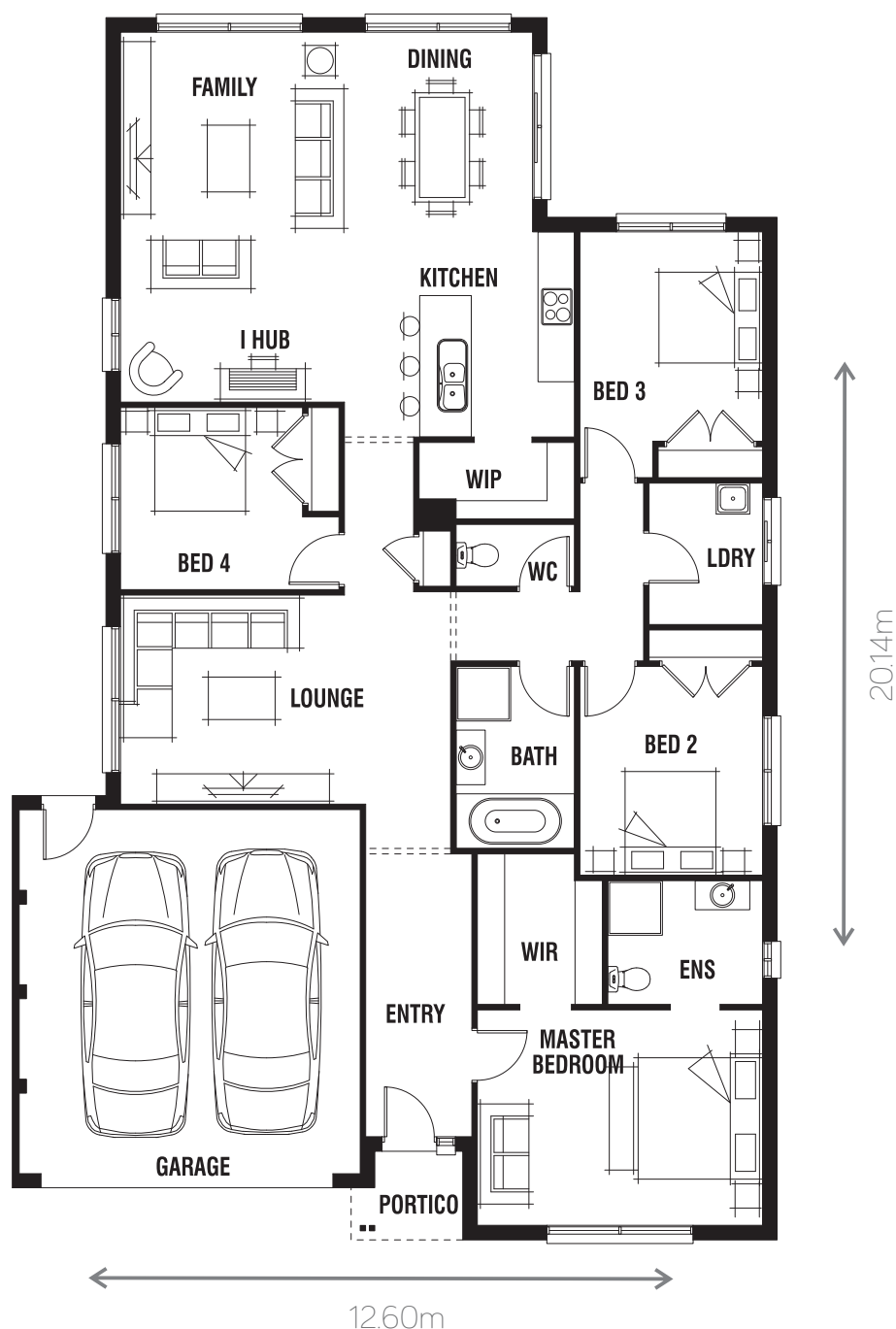
Bermuda 23

STANDARD FLOORPLAN with MAYA FACADE

4  2  2  2 

Lot Width **14.0m+**

Lot Depth **28.0m+**



AVAILABLE SIZES

BERMUDA 18

BERMUDA 23

DESIGN OPTIONS

ALFRESCO OPTION

KITCHEN, GRAND RUMPUS

KITCHEN, GRAND RUMPUS & ALFRESCO

KITCHEN, GRAND RUMPUS & GRAND ALFRESCO

KITCHEN, RUMPUS, & GAMES

KITCHEN, RUMPUS, GAMES & ALFRESCO

KITCHEN, RUMPUS, GAMES & GRAND ALFRESCO

MASTER ENSUITE

POWDER ROOM

RUMPUS

RUMPUS & ALFRESCO

RUMPUS & GRAND ALFRESCO

ROOM SIZES

Master Bedroom	4.7 x 3.6m
Bedroom 2	3.0 x 3.4m
Bedroom 3	3.0 x 3.5m
Bedroom 4	3.0 x 3.0m
Lounge	3.7 x 3.4m
Dining	3.1 x 3.3m
Family	3.7 x 4.1m

HOUSE AREA

Living Area	178.10m ²	19.17sq
Garage	36.20m ²	3.90sp
Portico	2.45m ²	0.26sq*
Total	216.75m²	23.33sq*



homes by
MICHAEL KREGAR

www.kregarhomes.com.au

*Sizes may vary slightly as per facade range. Floorplan based on the Maya facade - see facade pricelist for RRP. # Minimum Lot Sizes may vary due to Council requirements & estate guidelines. This work is exclusively owned by 'homes by MICHAEL KREGAR' and cannot be reproduced or copied either wholly or in part, in any form (graphic, electronic or mechanical, including photocopying and uploading to the internet) without the written permission of 'homes by MICHAEL KREGAR'. This document is for illustration purposes and should be used as a guide only. Illustrations are not to scale. Garage dimensions are external measurements only. Refer to actual working drawings.