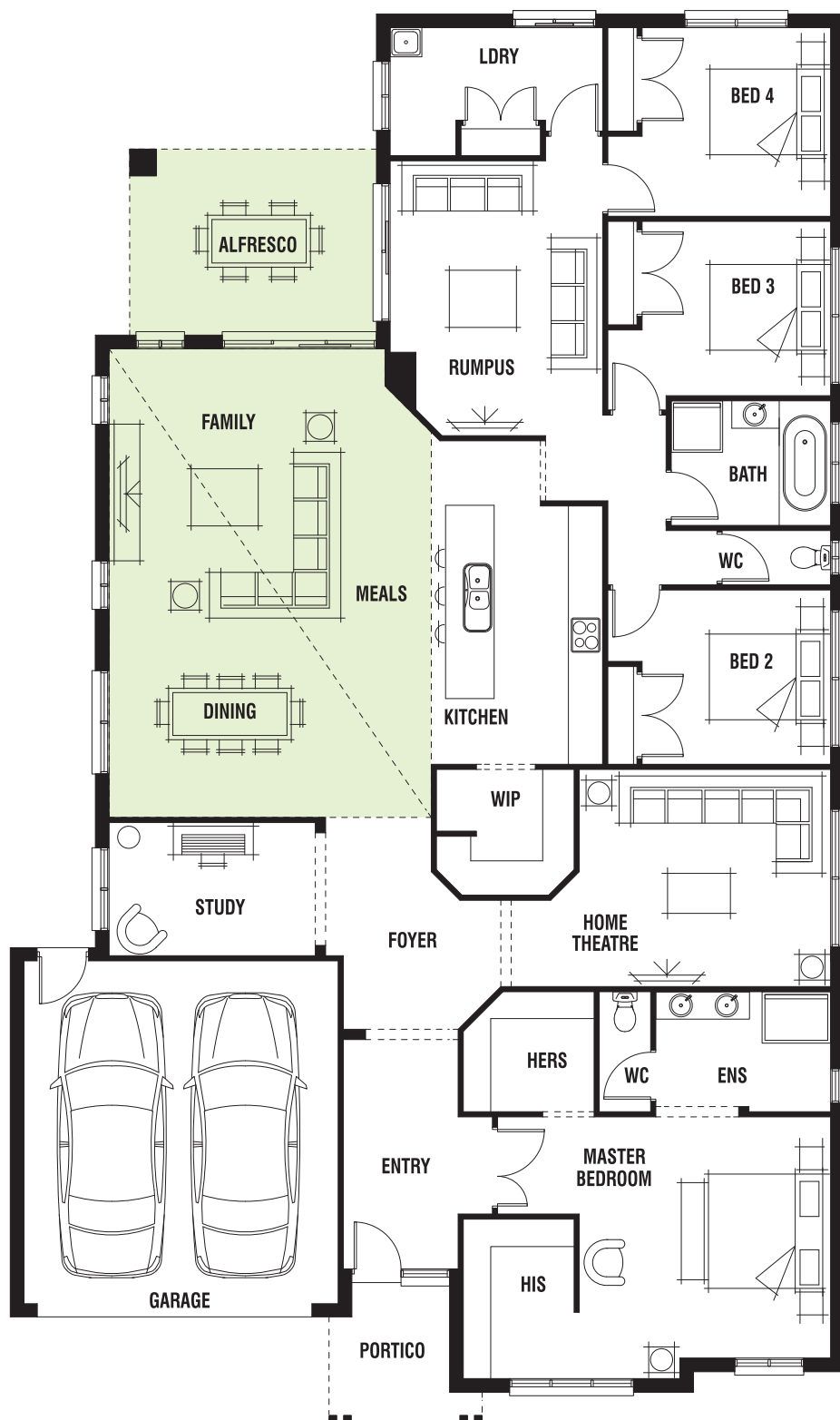


# Dunedin 31

RAKED CEILING TO FAMILY DINING WITH ALFRESCO FLOORPLAN with SEASIDE FACADE

4  3  2  2 



24.66m

MINIMUM  
LOT WIDTH#

**16.0m+**

MINIMUM  
LOT DEPTH#

**32.0m+**

TOTAL  
SQUARES

**33.01sq**



homes by  
**MICHAEL KREGAR**

[www.kregarhomes.com.au](http://www.kregarhomes.com.au)

\*Sizes may vary slightly as per facade range. Floorplan based on the Seaside facade - see facade pricelist for RRP. # Minimum Lot Sizes may vary due to Council requirements & estate guidelines. This work is exclusively owned by 'homes by MICHAEL KREGAR' and cannot be reproduced or copied either wholly or in part, in any form (graphic, electronic or mechanical, including photocopying and uploading to the internet) without the written permission of 'homes by MICHAEL KREGAR'. This document is for illustration purposes and should be used as a guide only. Illustrations are not to scale. Garage dimensions are external measurements only. Refer to actual working drawings.